

10 concerned municipalities
(14,000 km²) of the first stage

Contact

Do you have any questions regarding our services?

Please contact us.

EFTAS Remote Sensing Transfer of Technology GmbH
Oststrasse 2-18
48145 Muenster
Germany

Tel.: +49 251 13307-0

Fax: +49 251 13307-33

E-mail: carsten.haub@eftas.com

Internet: www.eftas.com



giz Deutsche Gesellschaft
für Internationale
Zusammenarbeit (GIZ) GmbH



EFTAS Fernerkundung Tel.: +49 251 133 07-0
Technologietransfer GmbH Fax: +49 251 133 07-33

Oststrasse 2-18
48145 Muenster, Germany

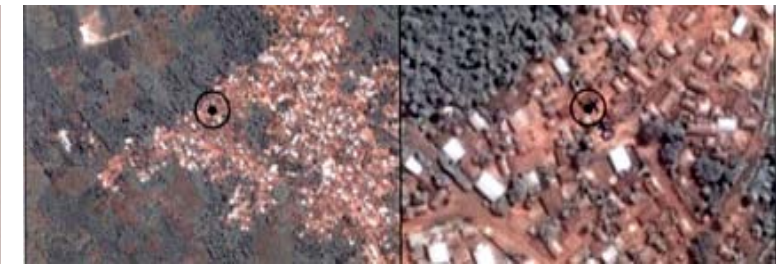
www.eftas.com
info@eftas.com

PFR Benin

Realisation of orthophoto maps for land management

your partner for geoinformation

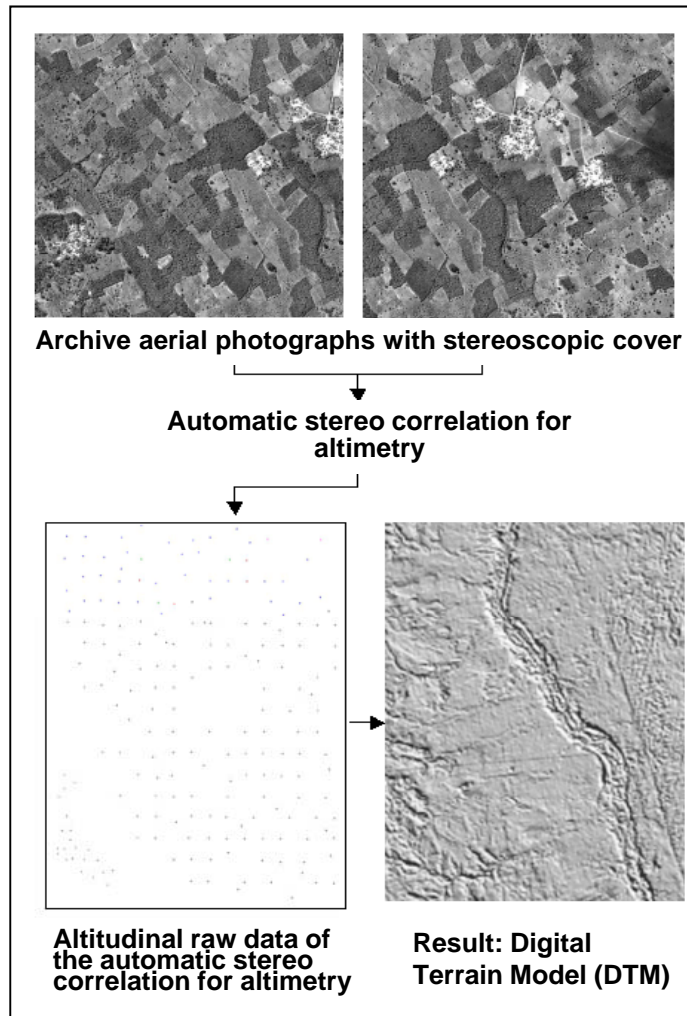




Objective

The Republic of Benin sets an example as a democratic and peaceful country in Africa and therefore has obtained the support of the Millennium Challenge Account (MCA) of the United States. The main objectives of the MCA are to promote economic growth and to fight poverty. In a country whose economy is dominated by agriculture land tenure security represents the basis for economic development and investments in rural areas. This is why MCA has decided to install land management plans for 300 villages. During the 5 year project term the GTZ-IS Benin is responsible for the organisation and coordination of the mission. In a first stage the company EFTAS has been commissioned to realise 14,000 km² of orthophoto maps on a scale of 1:5000 from Quickbird imagery.

Procedure for establishing the Digital Terrain Model



Generating orthophoto maps

