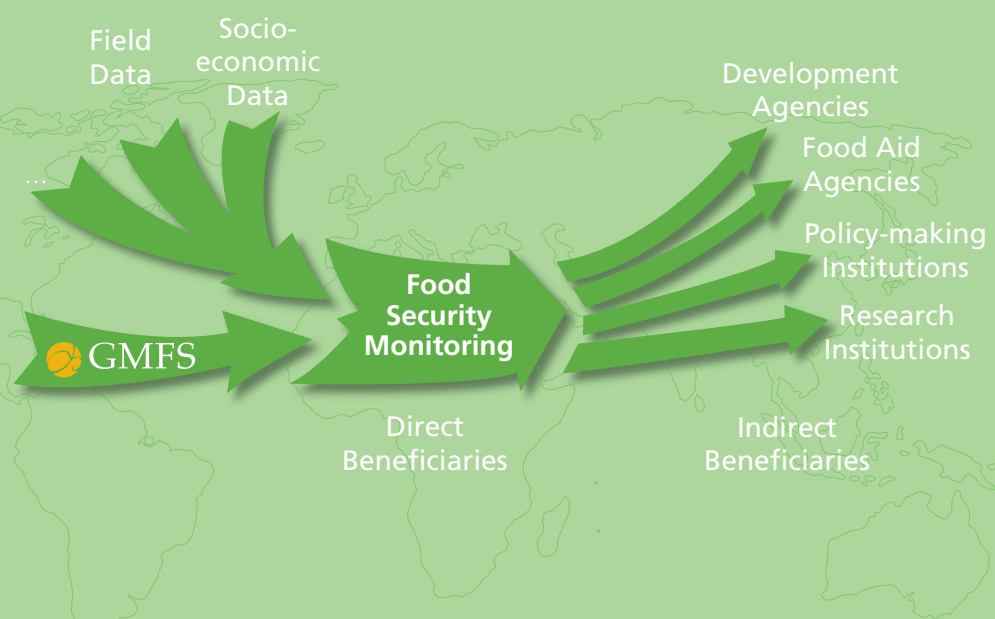
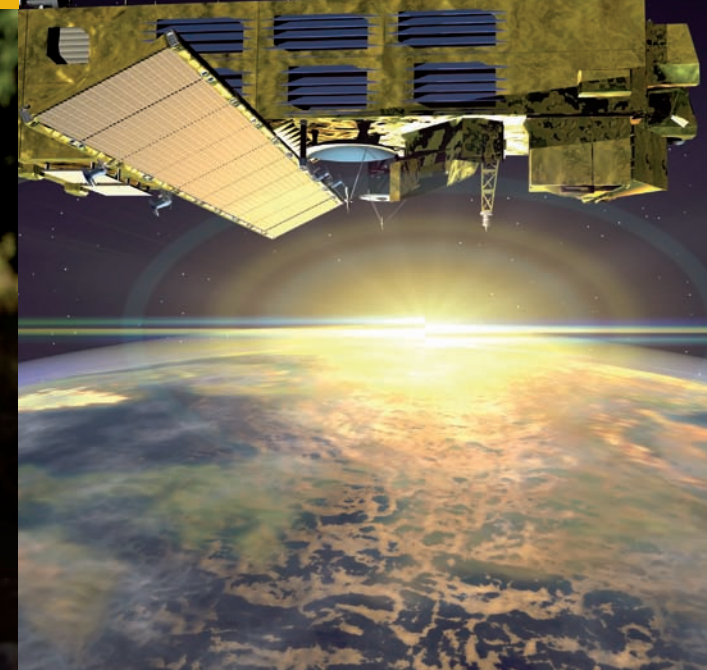


# GMFS Multi Scale Services

- Early Warning
- Agricultural Monitoring
- CFSAM Support

Space based  
Services for  
Africa's  
Agriculture



Global Monitoring for Food Security (GMFS) provides Earth Observation based services and encourages partnerships in monitoring agriculture and related environmental processes in Africa. The GMFS partnership brings together data and information providers in order to assist stakeholders, nations and international organisations in better implementing their policies towards sustainable development and food security.



GMFS Partnership  
Boeretang 200  
BE-2400 MOL • Belgium  
Tel. + 32 14 33 68 25 • Fax + 32 14 32 27 95  
info@gmfs.info • www.gmfs.info



Global  
Monitoring for  
Food Security



# Early Warning

Low resolution satellite data available at frequent time intervals helps users to follow the evolution of the crop season and to identify the location of food crises before they happen.

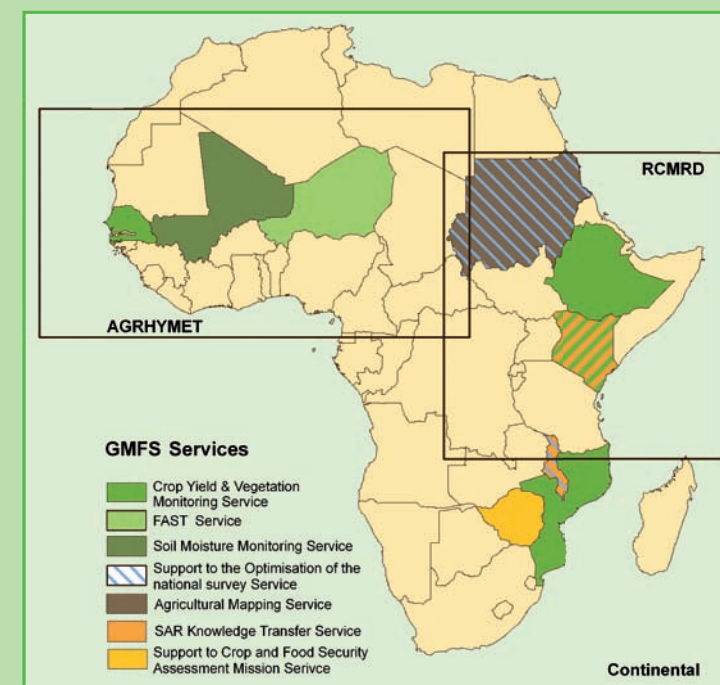


# Agricultural Monitoring

Agricultural production is an important factor to be monitored in order to assess food security. In that sense it is important to know:

- how much land is cultivated;
- where is this land located;
- how much is actually cropped and finally harvested.

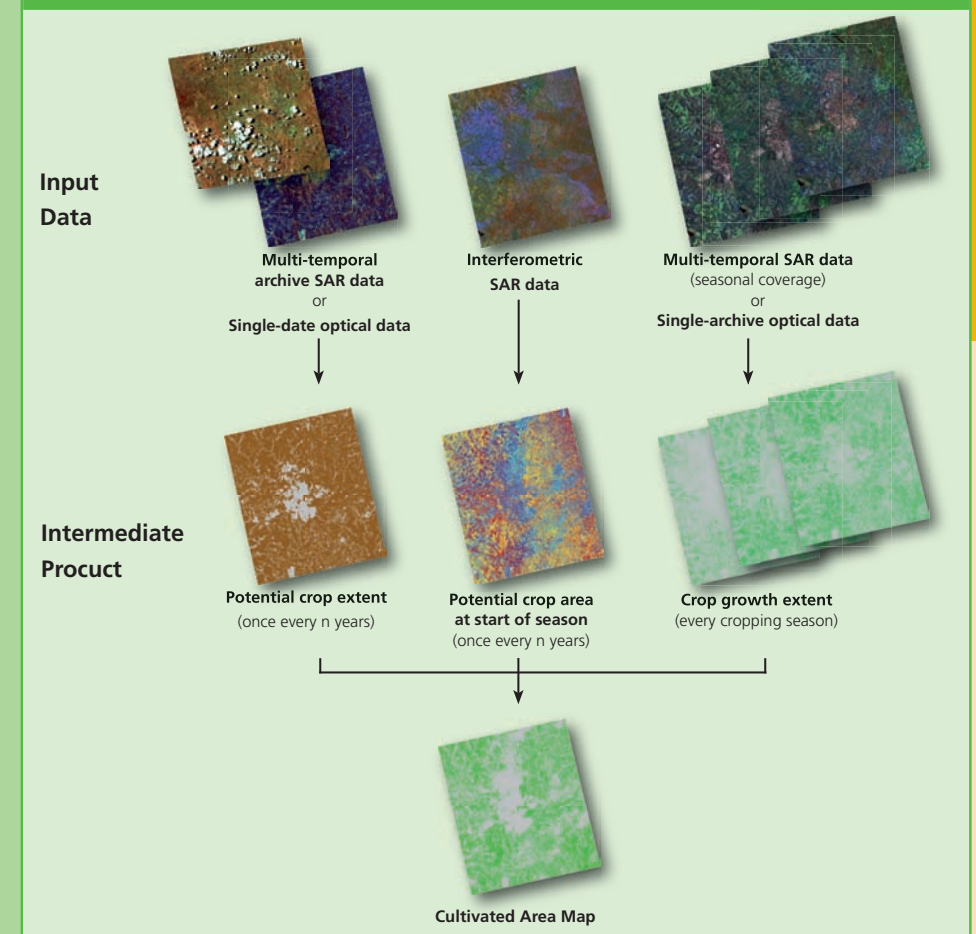
Spatial representation of this information is needed for food security analysis and actions that support sustainable, long term development. GMFS combines methodologies to map and survey agricultural land at national or locale scale on a seasonal basis. The GMFS Agricultural Monitoring service type ranges from a sustainable transfer of automated and semi automated mapping algorithms with SAR and optical satellite data to the optimization of national agricultural survey methods.



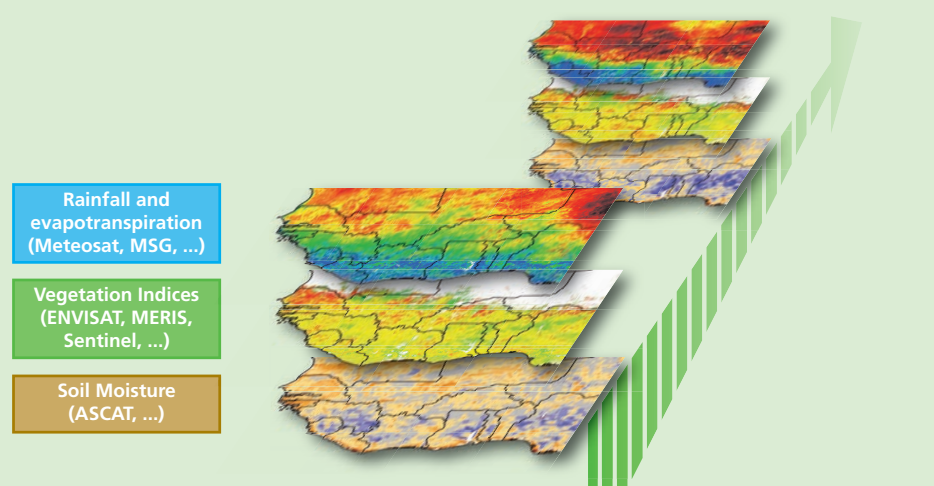
GMFS currently provides three service types and 7 services distributed over Sub-Saharan Africa, two African regions and in particular 9 African Countries.

Note: Final boundaries of Sudan are not yet available.

## Cultivated area mapping with optical and radar satellite data



The GMFS Early Warning Services provide meteorological, vegetation and soil moisture indicators on a high temporal frequency of 10 days. This enables the user to identify areas with anomalies and potential risk of crop failure on a near real time basis.



The service further includes value adding Data Dissemination System processing tools at continental and regional scale and crop yield and rangeland biomass forecast modeling at national scale.

# CFSAM Support

In addition to service chains and data products, GMFS provides systematic support to strengthen users' food security frameworks. In this respect the GMFS partnership provides support to the joint FAO/WFP Crop and Food Security Assessment Missions (CFSAM) through the provision of compiled summary reports based on available data and information, either ground-based or space-borne.

