

Worlds face varies.

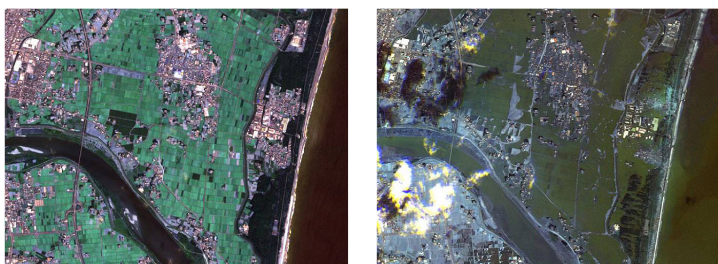
Automatic change detection for maintaining geographic data bases with DLM-Update.

Official geospatial data provided by cadastral authorities is a key dataset for all users in the context of survey, environment, agriculture and infrastructure. In order to provide up-to-date information to the user community official geospatial data has to be updated in a regular cycle on a high quality level. Due to economical restrictions and growing demands towards cadastral authorities, update processes are in need for optimization.

DLM-Update - software solution to update cadastral geospatial data.

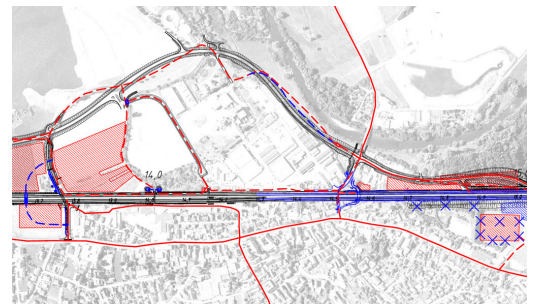
Automating main parts of the update workflow supports the ongoing survey. For this purpose EFTAS has built up a change seeker software to **update Digital Landscape Models: DLM-Update**.

DLM-Update enables users to manage change analysis for cadastral, environmental, agricultural or infrastructural survey via image analysis applications in an easy-to-use interface. The flexible integration of different input data is a key feature of our solutions. User specific data on vector or raster basis can be integrated as well as field information and satellite image data from the European Earth observation program COPERNICUS. As a novelty image data from the satellite system SENTINEL-2 can be imported and be automatically analysed by our algorithms.



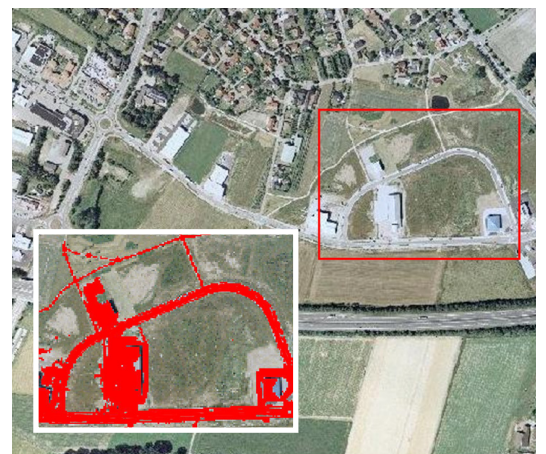
The combination of earth observation data and existing GIS data speeds up workflows and assures quality aspects in recurring actions.

We offer both DLM-Update and its customizing for your IT-workflow as well as data products using DLM-Update at EFTAS. Please contact us and together we will find the appropriate solution.



What DLM-Update can answer is:

- Where does a change of land use / land cover occur?
- Which land use land / cover cover classes are affected and to which class did they change?

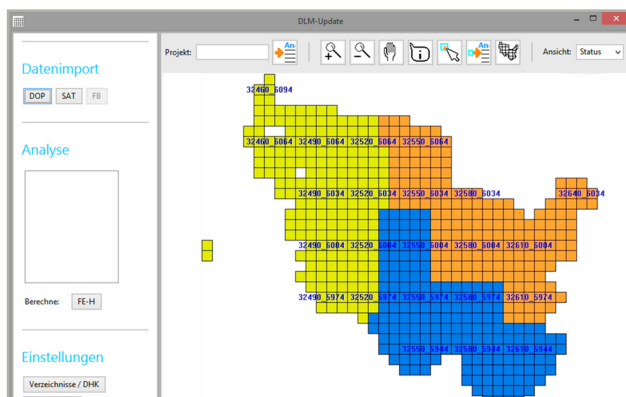


EFTAS.GeoIT
PRECISELY FOR **YOUR** WORLD

Change Detection as easy as it seems.

The DLM-Update user interface is clearly structured and reduced to the operations that are important for your workflow. The class catalogue and all classification rule sets in the background will be customized exactly to your needs. DLM-Update directly translates land cover classification results to the land use information from your object class catalogue. In that process DLM-Update and its earth observation data is always up to date, because it is directly connected to the data hubs of Europe's COPERNICUS programme. So to put it straight:

DLM-Update will let you become a remote-sensing expert for your task.



DLM-Update by EFTAS offers the following features:

- Import of raster and vector data in standard formats as well as database connections
- Customized import of user-specific data
- Usage of multi-temporal image data
- Meta data management and batch processing
- Import of training data for classification purposes
- Import of reference data for evaluation purposes
- Automatic derivation of training data for classification purposes from existing data sources
- Automatic multi-temporal land cover classification
- Automatic rule-based derivation of land use change indicators
- Export of land cover / land use change indicators
- Toolbar for integration of change detection results into your GIS environment



Kontakt:

Dr. Andreas Mütterthies

Email: geoinformation@eftas.com

Tel.: +49 (0)251 133 07-0

EFTAS Fernerkundung
Technologietransfer GmbH
Oststraße 2-18
48145 Münster
Germany
www.eftas.com

EFTAS.GeoIT
PRECISELY FOR YOUR WORLD